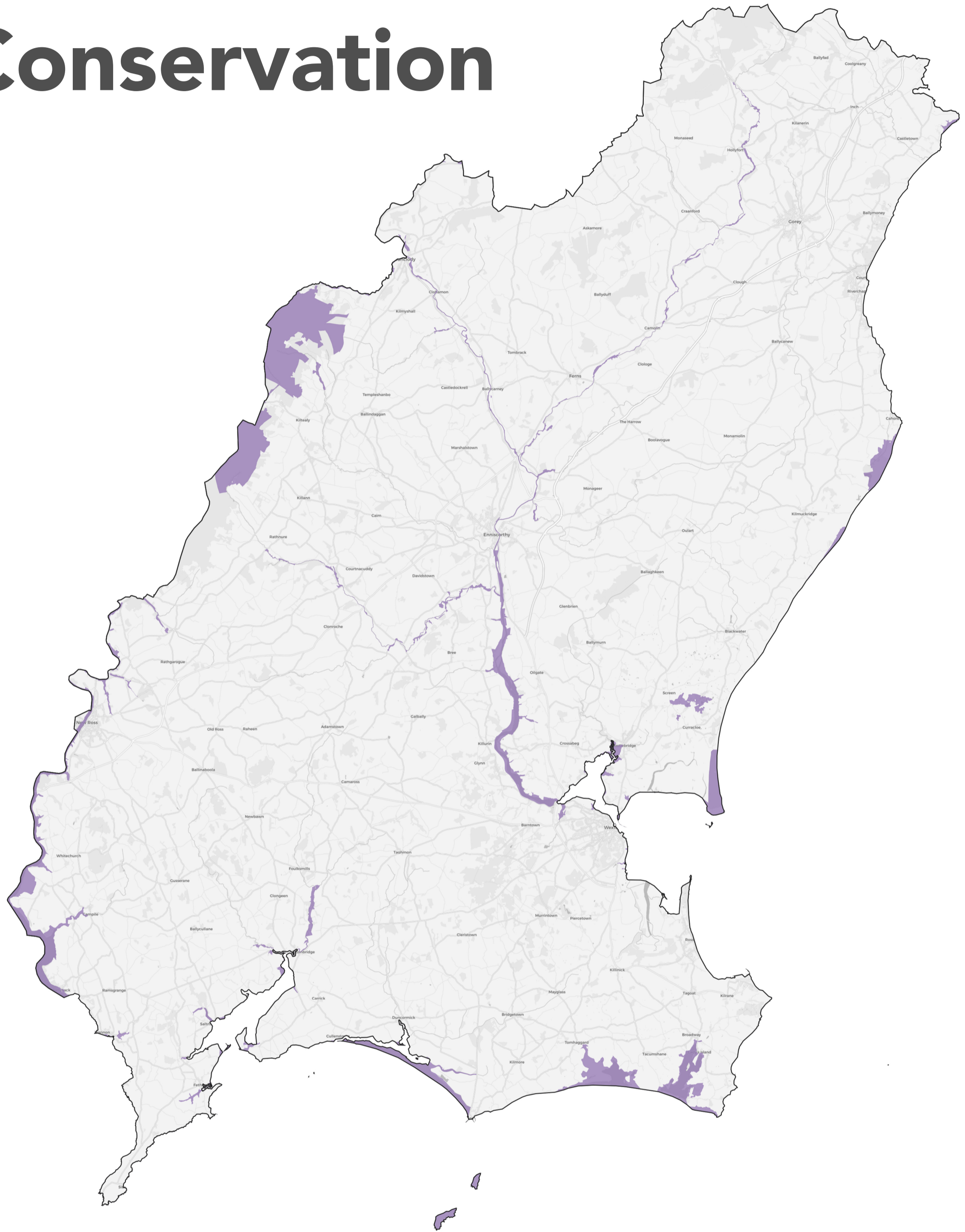


Special Areas of Conservation



Wexford

Sample of plants, habitats, and animals within the Special Areas of Conservation found in Wexford:

Annual vegetation of drift lines; Embryonic shifting dunes; Shifting dunes along the shoreline with *Ammophila arenaria* (white dunes); Fixed coastal dunes with herbaceous vegetation (grey dunes); Humid dune slacks; Sandbanks which are slightly covered by sea water all the time; Mudflats and sandflats not covered by seawater at low tide; Atlantic salt meadows (*Glauco-Puccinellietalia maritima*); Estuaries; Mediterranean salt meadows (*Juncetalia maritimi*); Mediterranean and thermo-Atlantic halophilous scrubs (*Sarcocornetea fruticosi*); Coastal lagoons; Atlantic decalcified fixed dunes (*Calluno-Ulicetea*); Perennial vegetation of stony banks; *Salicornia* and other annuals colonising mud and sand.