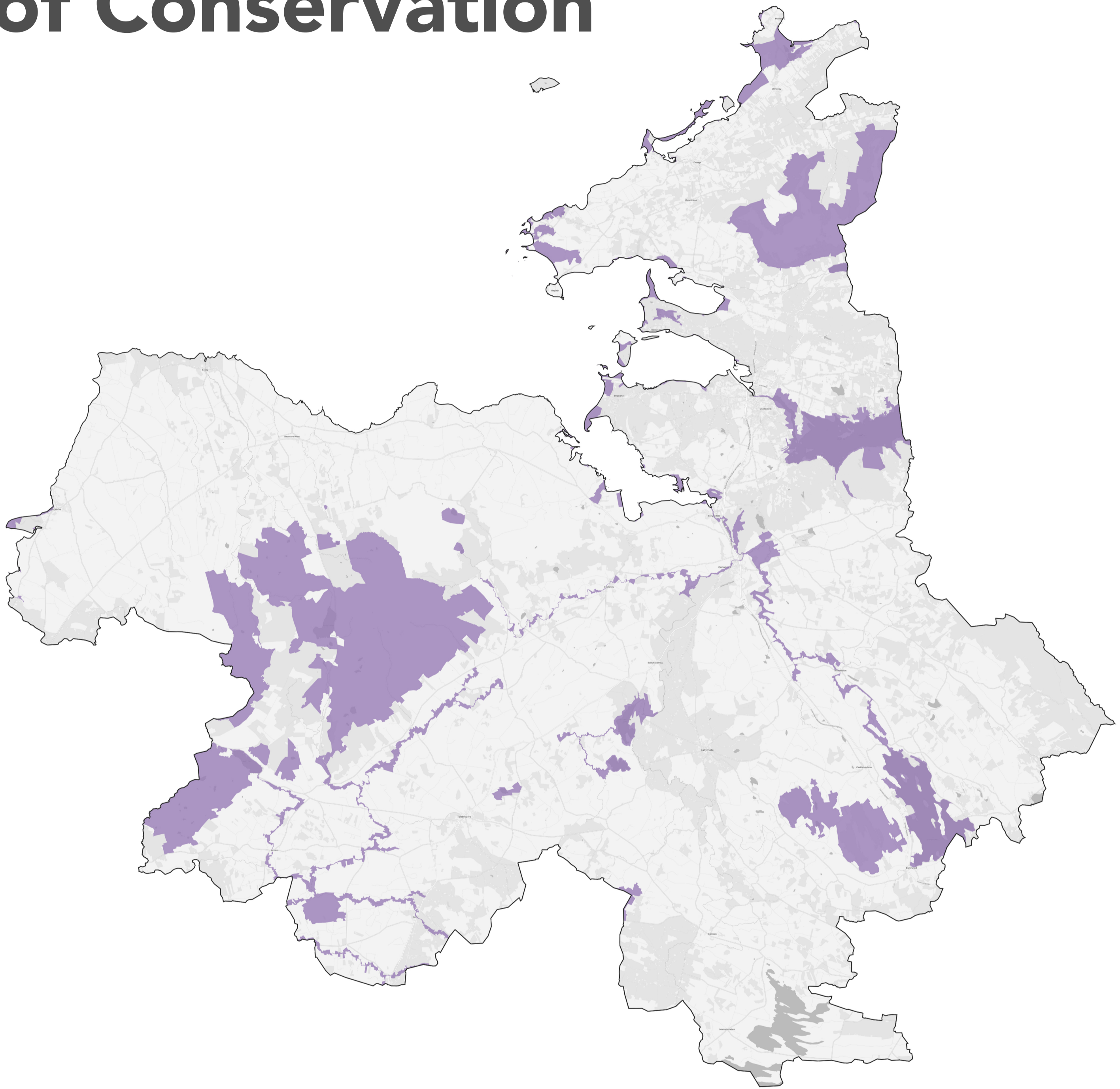


Special Areas of Conservation



Sligo

Sample of plants, habitats, and animals within the Special Areas of Conservation found in Sligo:

Blanket bogs; Oligotrophic waters containing very few minerals of sandy plains (*Littorelletalia uniflorae*); Natural dystrophic lakes and ponds; Northern Atlantic wet heaths with *Erica tetralix*; European dry heaths; Transition mires and quaking bogs; Depressions on peat substrates of the *Rhynchosporion*; *Vertigo geyeri* (Geyer's Whorl Snail); *Saxifraga hirculus* (Marsh Saxifrage); *Trichomanes speciosum* (Killarney Fern); Estuaries; Mudflats and sandflats not covered by seawater at low tide; Embryonic shifting dunes; Shifting dunes along the shoreline with *Ammophila arenaria* (white dunes); Fixed coastal dunes with herbaceous vegetation (grey dunes); Humid dune slacks; *Vertigo angustior* (Narrow-mouthed Whorl Snail); *Phoca vitulina* (Harbour Seal); Water courses of plain to montane levels with the *Ranunculion fluitantis* and *Callitriche-Batrachion* vegetation; Semi-natural dry grasslands and scrubland facies on calcareous substrates (*Festuco-Brometalia*); *Molinia* meadows on calcareous, peaty or clayey-silt-laden soils (*Molinion caeruleae*); Alluvial forests with *Alnus glutinosa* and *Fraxinus excelsior* (*Alno-Padion*, *Alnion incanae*, *Salicion albae*); *Salmo salar* (Salmon); *Lutra lutra* (Otter)