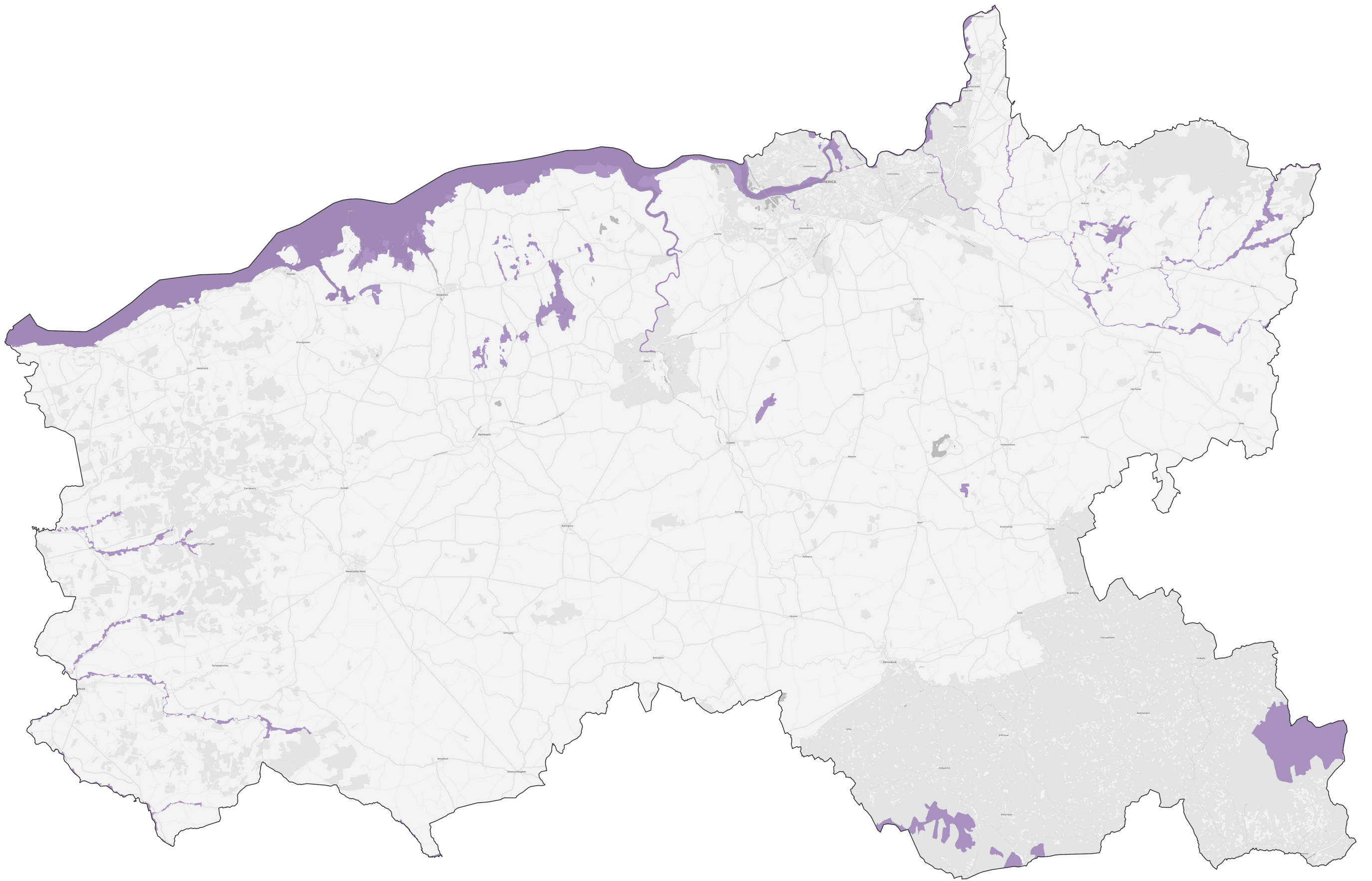


# Special Areas of Conservation



## Limerick

**Sample of plants, habitats, and animals within the Special Areas of Conservation found in Limerick:**

*Juniperus communis* formations on heaths or calcareous grasslands; Semi-natural dry grasslands and scrubland facies on calcareous substrates (*Festuco-Brometalia*); Limestone pavements; *Euphydryas aurinia* (Marsh Fritillary); Alluvial forests with *Alnus glutinosa* and *Fraxinus excelsior* (*Alno-Padion*, *Alnion incanae*, *Salicion albae*); *Taxus baccata* woods of the British Isles; *Vertigo moulinsiana* (Desmoulin's Whorl Snail); *Rhinolophus hipposideros* (Lesser Horseshoe Bat); Semi-natural dry grasslands and scrubland facies on calcareous substrates (*Festuco-Brometalia*) (important orchid sites); Calcareous fens with *Cladium mariscus* and species of the *Caricion davallianae*; Alkaline fens; Northern Atlantic wet heaths with *Erica tetralix*; European dry heaths; Blanket bogs.