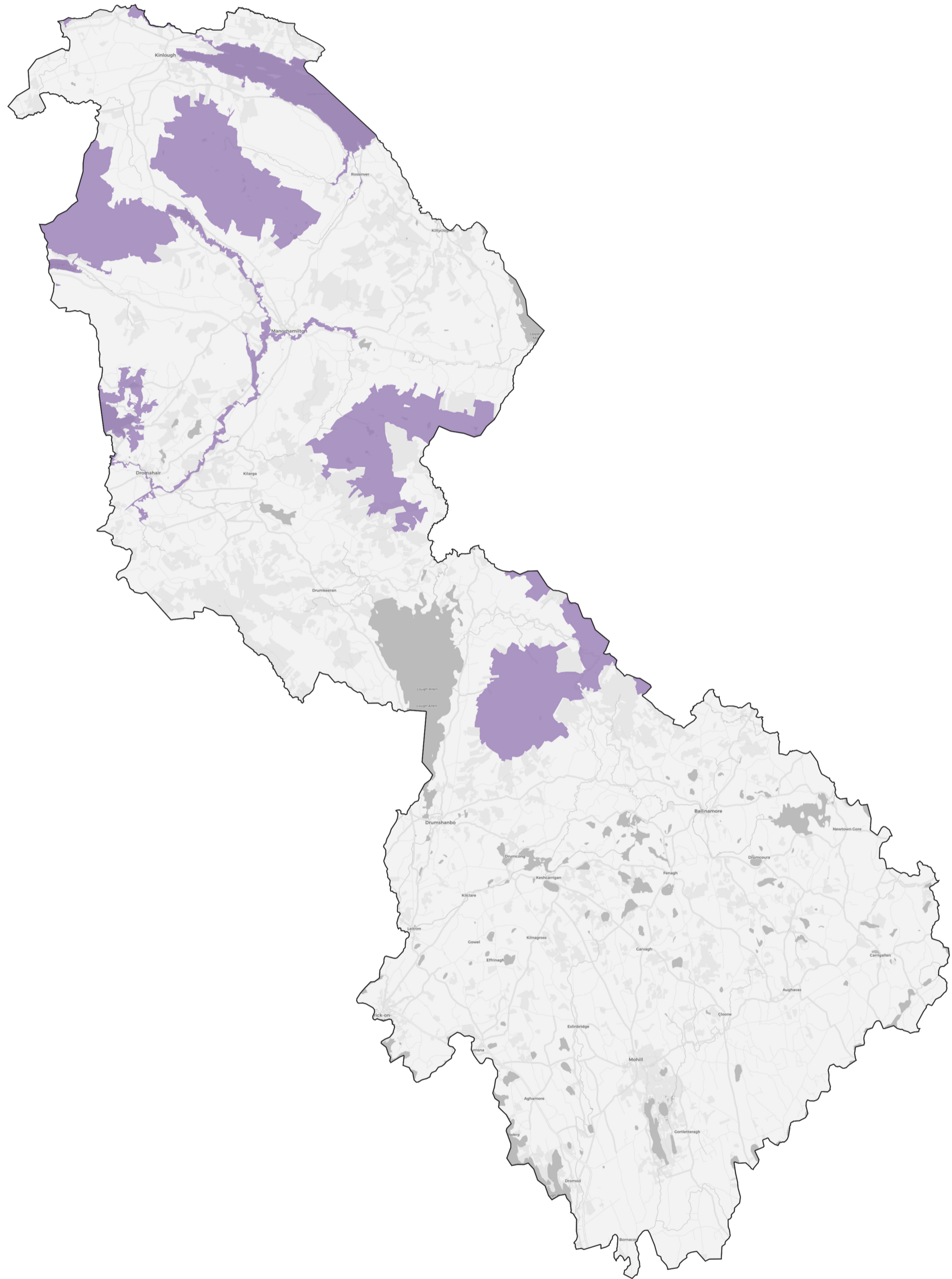


Special Areas of Conservation



Leitrim

Sample of plants, habitats, and animals within the Special Areas of Conservation found in Leitrim:

Oligotrophic to mesotrophic standing waters with vegetation of the Littorelletea uniflorae and/or Isoeto-Nanojuncetea; Molinia meadows on calcareous, peaty or clayey-silt-laden soils (Molinion caeruleae); *Salmo salar* (Salmon); *Lutra lutra* (Otter); Northern Atlantic wet heaths with *Erica tetralix*; European dry heaths; Alpine and Boreal heaths; Blanket bogs; Petrifying springs with tufa formation (Cratoneurion); Calcareous and calcshist screes of the montane to alpine levels (Thlaspietea rotundifolii); Calcareous rocky slopes with chasmophytic vegetation; Natural dystrophic lakes and ponds; Old sessile oak woods with *Ilex* and *Blechnum* in the British Isles; *Austropotamobius pallipes* (White-clawed Crayfish); *Petromyzon marinus* (Sea Lamprey); *Lampetra planeri* (Brook Lamprey); *Lampetra fluviatilis* (River Lamprey).