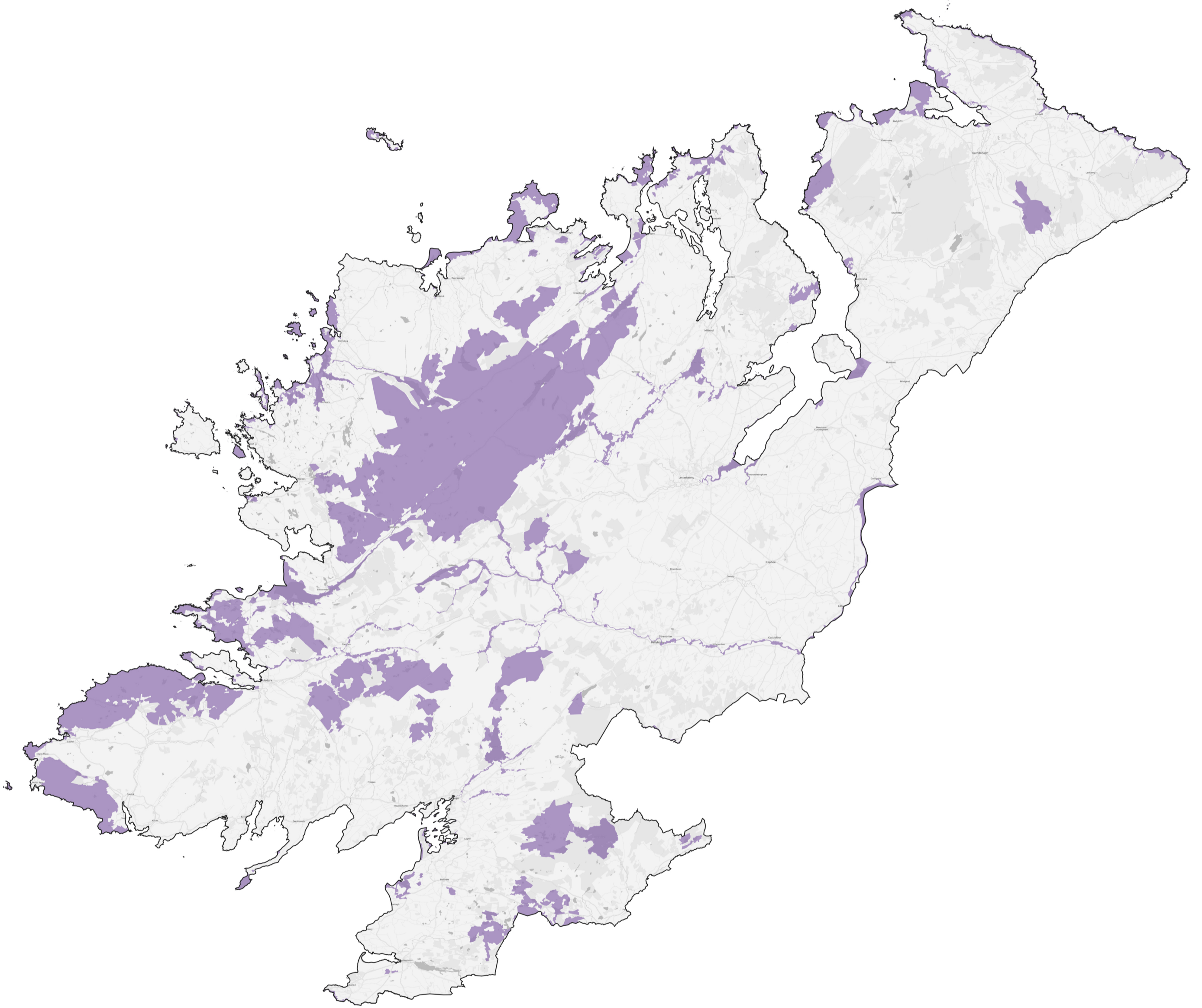


Special Areas of Conservation



Donegal

Sample of plants, habitats, and animals within the Special Areas of Conservation found in Donegal:

Northern Atlantic wet heaths with *Erica tetralix*; European dry heaths; Alpine and Boreal heaths; Molinia meadows on calcareous, peaty or clayey-silt-laden soils (*Molinia caerulea*); Blanket bogs; Old sessile oak woods with *Ilex* and *Blechnum* in the British Isles; *Margaritifera margaritifera* (Freshwater Pearl Mussel); *Salmo salar* (Salmon); *Lutra lutra* (Otter); *Trichomanes speciosum* (Killarney Fern); Vegetated sea cliffs of the Atlantic and Baltic coasts; Atlantic salt meadows (*Glauco-Puccinellietalia maritima*); Mediterranean salt meadows (*Juncetalia maritimi*); Embryonic shifting dunes; Shifting dunes along the shoreline with *Ammophila arenaria* (white dunes); Fixed coastal dunes with herbaceous vegetation (grey dunes); Decalcified fixed dunes with *Empetrum nigrum*; Atlantic decalcified fixed dunes (*Calluno-Ulicetalia*); Humid dune slacks; Alpine and Boreal heaths; *Vertigo angustior* (Narrow-mouthed Whorl Snail); *Halichoerus grypus* (Grey Seal).