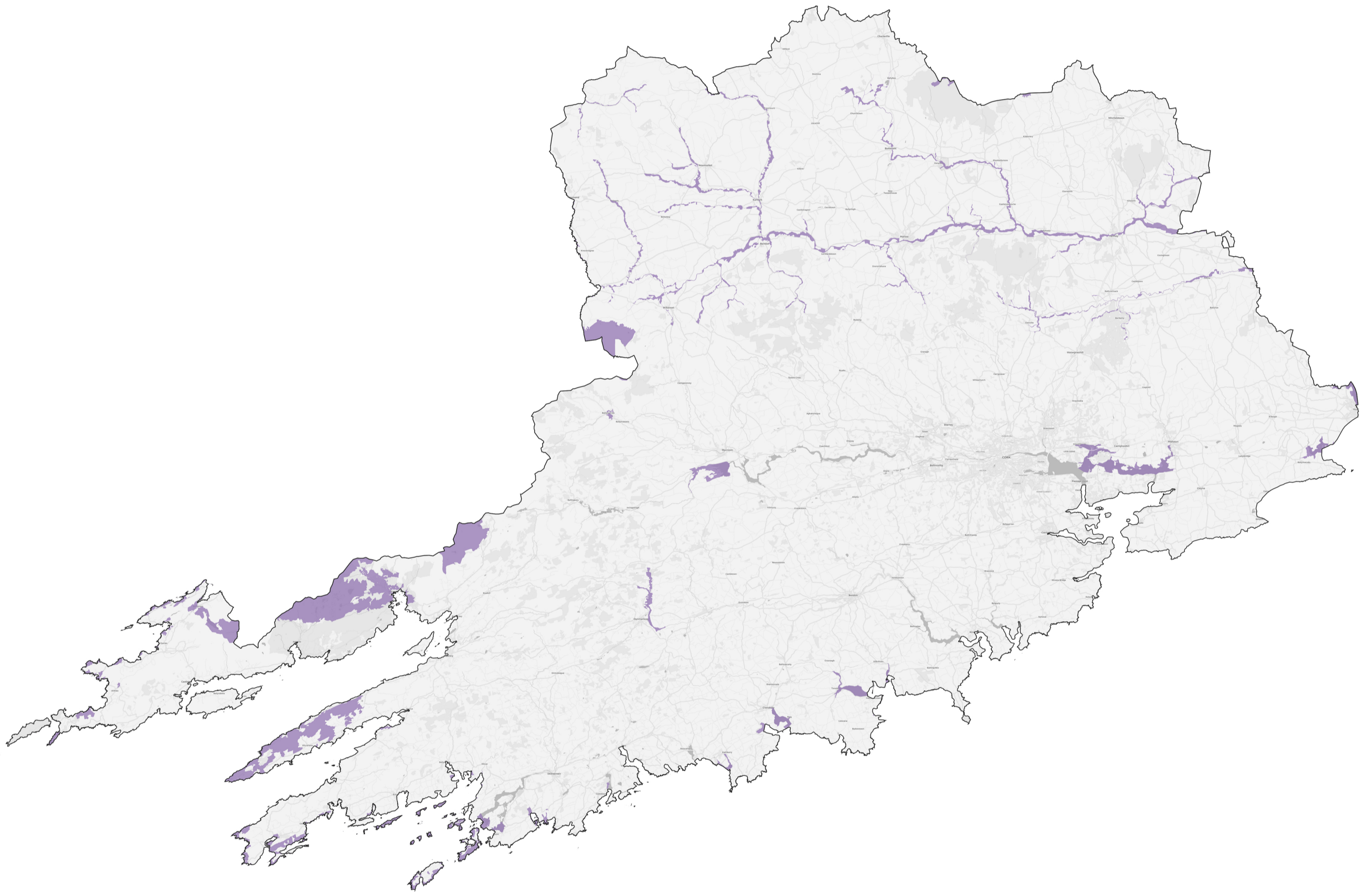


Special Areas of Conservation



Cork

Sample of plants, habitats, and animals within the Special Areas of Conservation found in Cork:

Water courses of plain to montane levels with the *Ranuncion fluitantis* and *Callitricho-Batrachion* vegetation; Rivers with muddy banks with *Chenopodion rubri* p.p. and *Bidention* p.p. vegetation; Old sessile oak woods with *Ilex* and *Blechnum* in the British Isles; Alluvial forests with *Alnus glutinosa* and *Fraxinus excelsior* (*Alno-Padion*, *Alnion incanae*, *Salicion albae*); *Lutra lutra* (Otter); *Margaritifera margaritifera* (Freshwater Pearl Mussel); *Lampetra planeri* (Brook Lamprey); Estuaries; Mudflats and sandflats not covered by seawater at low tide; Annual vegetation of drift lines; Perennial vegetation of stony banks; *Salicornia* and other annuals colonising mud and sand; Atlantic salt meadows (*Glauco-Puccinellietalia maritimae*); Mediterranean salt meadows (*Juncetalia maritimi*); Embryonic shifting dunes; Shifting dunes along the shoreline with *Ammophila arenaria* (white dunes); Fixed coastal dunes with herbaceous vegetation (grey dunes).