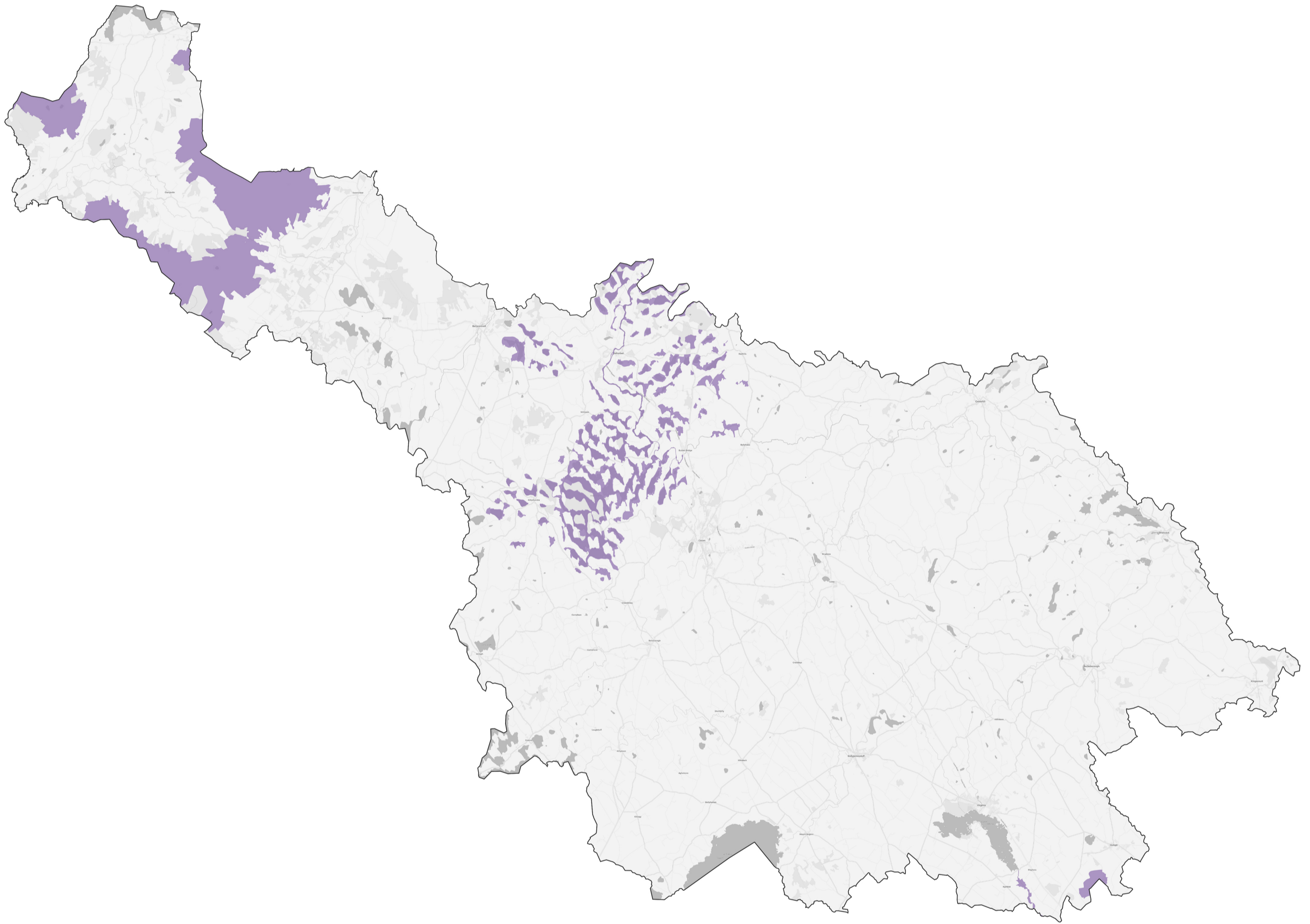


Special Areas of Conservation



Cavan

Sample of plants, habitats, and animals within the Special Areas of Conservation found in Cavan:

Natural eutrophic lakes with Magnopotamion or Hydrocharition - type vegetation; Bog woodland; *Lutra lutra* (Otter); Oligotrophic waters containing very few minerals of sandy plains (*Littorelletalia uniflorae*); Natural dystrophic lakes and ponds; Northern Atlantic wet heaths with *Erica tetralix*; European dry heaths; Alpine and Boreal heaths; Species-rich *Nardus* grasslands, on siliceous substrates in mountain areas; Blanket bogs; Transition mires and quaking bogs; Petrifying springs with tufa formation (*Cratoneurion*); Siliceous scree of the montane to snow levels (*Androsacetalia alpinae* and *Galeopsietalia ladani*); Siliceous rocky slopes with chasmophytic vegetation; *Hamatocaulis vernicosus* (Slender Green Feather-moss); Limestone pavements.